

High-Temperature Insulator Sheets (HTIS)

Conserve Energy - Prolong Machine Life



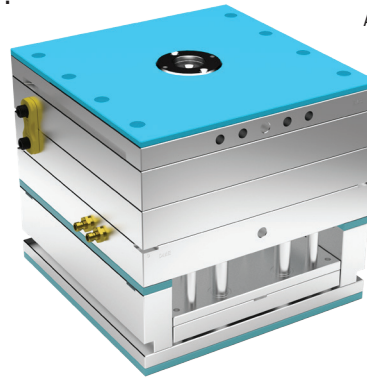
DME Blue High-Temperature Insulator Sheets are designed for the Mold and Die industries to prevent heat transfer & conserve energy.

Benefits of Blue

- Reduced energy costs
- Consistent high quality parts
- Faster start-up times
- Lower overall maintenance
- Excellent mechanical, chemical & electrical properties
- 1/16" shorter on all sides to prevent damage during mold handling

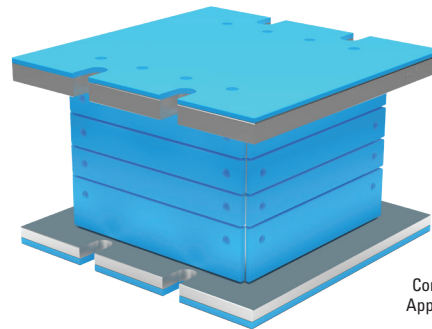
Applications

- Injection Molds - top, bottom & rails
- Molding Machines - press platen
- Compression Molds - multiple faces



Injection Mold Application Example

ENERGY SAVINGS	
¼ THICK	= 27,508 BTU/HR
½ THICK	= 31,004 BTU/HR

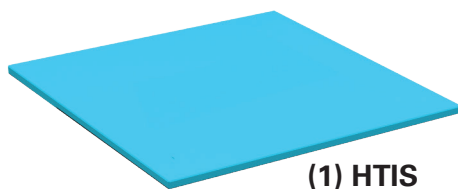


Compression Mold Application Example

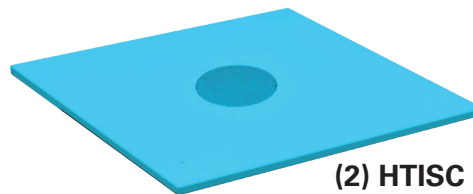
Available in 4 styles:

- (1.) **HTIS** - Blank sheets - full or cut to standard mold base size
Ideal for all faces of **Compression Mold Bases** (special order cut to size or machine in-house)
- (2.) **HTISC*** - Machined with the center hole only (use with 6541 and 6544 locating rings)
- (3.) **HTISM*** - Pre-machined complete with center hole, assembly holes & HTIS installation holes
- (4.) **Custom** - Cut to size and machined per customer supplied file

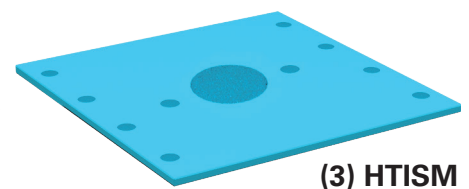
* Dimensions and locations based on the DME Classic Mold Base



(1) HTIS



(2) HTISC



(3) HTISM

General Data

*COMPRESSIVE STRENGTH	(ASTM D-229)	49,400 PSI AT 75°F / 27,200 PSI AT 300°F / 18,000 PSI AT 400°F 17,100 PSI AT 500°F / 15,000 PSI AT 550°F /
MODULUS OF ELASTICITY IN COMPRESSION	(ASTM D-229)	1.8 X 10 ⁶ PSI AT 75°F / 2.9 X 10 ⁶ PSI AT 425°F
WATER ABSORPTION	(ASTM D-229)	0.2%
THERMAL CONDUCTIVITY (K FACTOR), (BTU/HR/FT ² /IN/°F)	(ASTM C-177)	1.9 AT 75°F / 2.1 AT 425°F
FLAME RESISTANCE	(UL SUBJECT 94)	94V-0
EXPANSION ACROSS THICKNESS EXPANSION ACROSS SURFACE		6.43 X 10 ⁻⁵ IN/IN/°F / .24 X 10 ⁻⁵ IN/IN/°F
MAXIMUM RECOMMENDED SERVICE TEMPERATURE		550°F
THICKNESS TOLERANCE		+/- .002

High-Temperature Insulator Sheets (HTIS)

MOLD BASE SERIES	L x W +/- .06	BLANK 1/4" THICK	BLANK 1/2" THICK	CENTER HOLE ONLY MACHINED 1/4" THICK	CENTER HOLE ONLY MACHINED 1/2" THICK	PRE-MACHINED COMPLETE 1/4" THICK	PRE-MACHINED COMPLETE 1/2" THICK
88	8x8	HTIS882	HTIS884	HTISC882	HTISC884	HTISM882	HTISM884
812	8x12	HTIS8122	HTIS8124	HTISC8122	HTISC8124	HTISM8122	HTISM8124
108	10x8	HTIS1082	HTIS1084	HTISC1082	HTISC1084	HTISM1082	HTISM1084
1012	10x12	HTIS10122	HTIS10124	HTISC10122	HTISC10124	HTISM10122	HTISM10124
1016	10x16	HTIS10162	HTIS10164	HTISC10162	HTISC10164	HTISM10162	HTISM10164
1020	10x20	HTIS10202	HTIS10204	HTISC10202	HTISC10204	HTISM10202	HTISM10204
1112	11x12	HTIS11122	HTIS11124	HTISC11122	HTISC11124	HTISM11122	HTISM11124
1114	11x14	HTIS11142	HTIS11144	HTISC11142	HTISC11144	HTISM11142	HTISM11144
1118	11x18	HTIS11182	HTIS11184	HTISC11182	HTISC11184	HTISM11182	HTISM11184
1123	11 X 23	HTIS11232	HTIS11234	HTISC11232	HTISC11234	HTISM11232	HTISM11234
1212	12 X 12	HTIS12122	HTIS12124	HTISC12122	HTISC12124	HTISM12122	HTISM12124
1215	12 X 15	HTIS12152	HTIS12154	HTISC12152	HTISC12154	HTISM12152	HTISM12154
1220	12 X 20	HTIS12202	HTIS12204	HTISC12202	HTISC12204	HTISM12202	HTISM12204
1223	12 X 23	HTIS12232	HTIS12234	HTISC12232	HTISC12234	HTISM12232	HTISM12234
1315	13 X 15	HTIS13152	HTIS13154	HTISC13152	HTISC13154	HTISM13152	HTISM13154
1318	13 X 18	HTIS13182	HTIS13184	HTISC13182	HTISC13184	HTISM13182	HTISM13184
1321	13 X 21	HTIS13212	HTIS13214	HTISC13212	HTISC13214	HTISM13212	HTISM13214
1323	13 X 23	HTIS13232	HTIS13234	HTISC13232	HTISC13234	HTISM13232	HTISM13234
1326	13 X 26	HTIS13262	HTIS13264	HTISC13262	HTISC13264	HTISM13262	HTISM13264
1329	13 X 29	HTIS13292	HTIS13294	HTISC13292	HTISC13294	HTISM13292	HTISM13294
1518	15 X 18	HTIS15182	HTIS15184	HTISC15182	HTISC15184	HTISM15182	HTISM15184
1524	15 X 24	HTIS15242	HTIS15244	HTISC15242	HTISC15244	HTISM15242	HTISM15244
1529	15 X 29	HTIS15292	HTIS15294	HTISC15292	HTISC15294	HTISM15292	HTISM15294
1616	16 X 16	HTIS16162	HTIS16164	HTISC16162	HTISC16164	HTISM16162	HTISM16164
1620	16 X 20	HTIS16202	HTIS16204	HTISC16202	HTISC16204	HTISM16202	HTISM16204
1623	16 X 23	HTIS16232	HTIS16234	HTISC16232	HTISC16234	HTISM16232	HTISM16234
1626	16 X 26	HTIS16262	HTIS16264	HTISC16262	HTISC16264	HTISM16262	HTISM16264
1629	16 X 29	HTIS16292	HTIS16294	HTISC16292	HTISC16294	HTISM16292	HTISM16294
1635	16 X 35	HTIS16352	HTIS16354	HTISC16352	HTISC16354	HTISM16352	HTISM16354
1724	17 X 24	HTIS17242	HTIS17244	HTISC17242	HTISC17244	HTISM17242	HTISM17244
1729	17 X 29	HTIS17292	HTIS17294	HTISC17292	HTISC17294	HTISM17292	HTISM17294
1818	18 X 18	HTIS18182	HTIS18184	HTISC18182	HTISC18184	HTISM18182	HTISM18184
1820	18 X 20	HTIS18202	HTIS18204	HTISC18202	HTISC18204	HTISM18202	HTISM18204
1823	18 X 23	HTIS18232	HTIS18234	HTISC18232	HTISC18234	HTISM18232	HTISM18234
1826	18 X 26	HTIS18262	HTIS18264	HTISC18262	HTISC18264	HTISM18262	HTISM18264
1829	18 X 29	HTIS18292	HTIS18294	HTISC18292	HTISC18294	HTISM18292	HTISM18294
1835	18 X 35	HTIS18352	HTIS18354	HTISC18352	HTISC18354	HTISM18352	HTISM18354
1924	19 X 24	HTIS19242	HTIS19244	HTISC19242	HTISC19244	HTISM19242	HTISM19244
1929	19 X 29	HTIS19292	HTIS19294	HTISC19292	HTISC19294	HTISM19292	HTISM19294
1935	19 X 35	HTIS19352	HTIS19354	HTISC19352	HTISC19354	HTISM19352	HTISM19354
2424	24 X 24	HTIS24242	HTIS24244	HTISC24242	HTISC24244	HTISM24242	HTISM24244
2429	24 X 29	HTIS24292	HTIS24294	HTISC24292	HTISC24294	HTISM24292	HTISM24294
2435	24 X 35	HTIS24352	HTIS24354	HTISC24352	HTISC24354	HTISM24352	HTISM24354
	18x36	HTIS18362	HTIS18364	Full size length x width (not 1/16" undersized)			
	24x36	HTIS24362	HTIS24364				
	36x36	HTIS36362	HTIS36364				
	48x96	HTIS48962	HTIS48964				

Installation: Use DME 1/4-20 Flat Head Cap Screws FHCS1420-12 for 1/4" sheets FHCS1420-34 for 1/2" sheets.

NOTES: Special sizes available on special order: Max. length = 96", Max. width = 48", Max thickness = 1", Min. thickness = 1/8"
Special machining available upon request, send .dwg files to dme@dme.net for quotation.