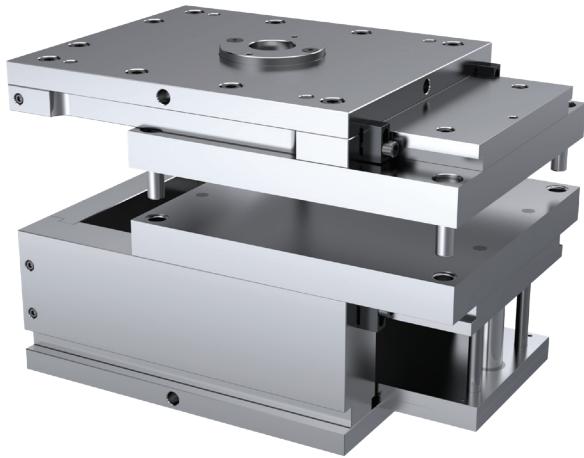




Maximum Uptime • Modular Frames • Lower Cost

MUD[®] Quick-Change Systems

Modular frames and interchangeable inserts for lean injection molding



MUD Quick-Change Systems are an integral part of lean manufacturing strategies worldwide, delivering proven increases in uptime and measurable reductions in tooling and labor costs.

A precision-built Quick-Change frame **remains installed in the molding machine**, while an **unlimited number of companion insert molds** are interchanged within it as production requirements change. Since only the insert mold is replaced rather than the entire mold base, tooling costs, changeover time, and labor are all reduced dramatically.

75%
Less downtime



Quick changeover

Loosen 4 clamps, swap insert, resume production

< 5 min
Changeover time



Unlimited inserts

One frame accepts any number of companion insert molds

66%
Lower tooling cost



Reduced downtime

Backup inserts install instantly

Lower tooling cost

Only the insert mold is replaced, not the full mold base

Easier maintenance

Lighter, smaller inserts vs full mold bases

Compact storage

Lightweight inserts store on standard bookcase shelving

Steel Specifications:

Frames: Standard frames are produced in prehard DME #2 steel (285–325 Brinell) and DME #7 stainless steel.

Inserts: 1020, 4130 prehard, P-20 prehard, Aluminum (Alumold[®] 500 or equivalent) and H-13 as standard. 420 stainless and other grades are available on request.

H-13 insert molds are supplied 0.010" oversize on length, width and thickness, and 0.030" undersize on pin and bushing holes for final machining after heat treatment.

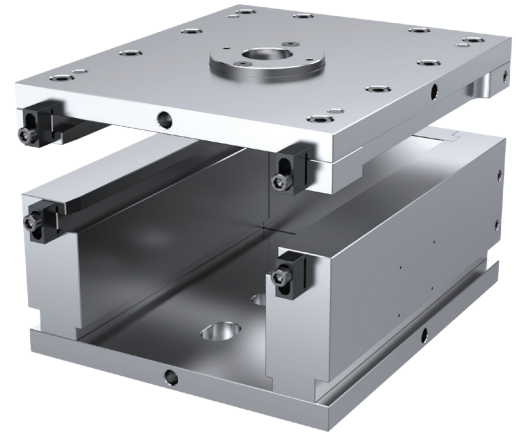


MUD® Quick-Change U-Frame Systems

Maximum design flexibility with standard and full-width T-style interchangeable inserts

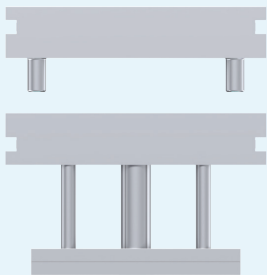
The MUD Quick-Change U-Frame is an open-design system built to deliver maximum flexibility and simple operation. It accommodates two insert styles: **standard inserts**, which fit within the frame footprint, and **T-style inserts**, which utilize the full frame width to maximize usable molding area.

Both insert styles can be configured in a wide range of thicknesses to meet machine shut height requirements. The open-frame design provides unrestricted access for **cooling lines, hydraulics, and auxiliary systems**, allowing connections from any side of the insert without design constraints.

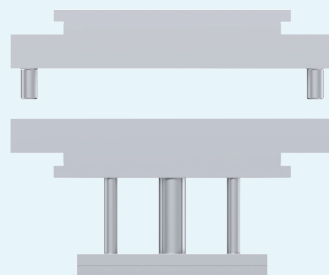


Companion Insert Molds:

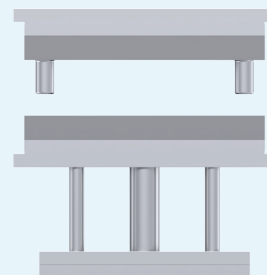
A wide range of insert configurations are available to meet different molding and application requirements.



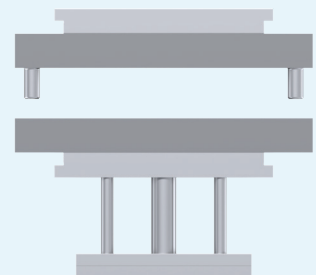
Standard Solid
(General use)



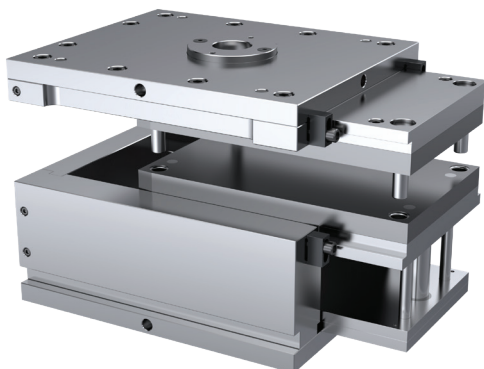
T-Style Solid
(Max area)



Standard Laminated
(Cost effective)



T-Style Laminated
(High flexibility)



Optimizing Production with U-Frames

- Standardize frame sizes to support **multiple product variants**
- Select the appropriate insert style based on **part size, projected area, and molding requirements**
- Maintain multiple insert sets to **minimize machine idle time**
- Keep pre-assembled inserts ready for **faster changeovers**
- Plan insert changes for **just-in-time production**
- Use spare inserts to ensure **uninterrupted production during maintenance or repairs**

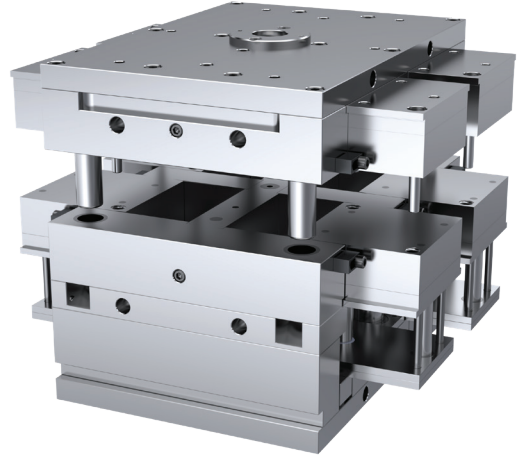
MUD® Quick-Change

H-Frame & Double H-Frame Systems

Higher productivity with multiple insert molding in a single frame

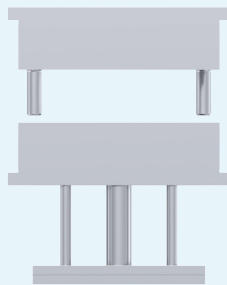
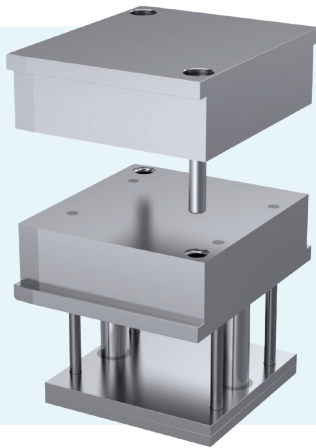


H-Frame - 2 inserts per cycle

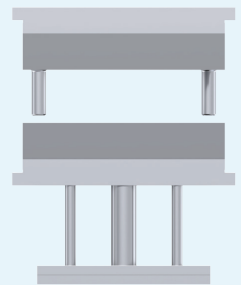
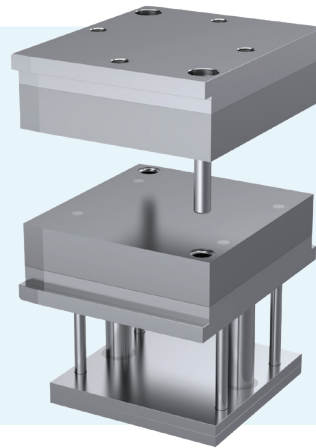


Double H-Frame - 4 inserts per cycle

Companion Insert Molds: Two insert configurations are available: **standard solid** and **laminated** designs.



Standard Solid
(General use)



Standard Laminated
(Cost effective)

Optimizing Production with H-Frames

- **H-Frame:** Runs two insert molds simultaneously, doubling output per cycle
- **Double H-Frame:** Runs four insert molds simultaneously, quadrupling output per cycle
- Select H-Frame or Double H-Frame based on required output and cycle requirements
- Pre-assembled backup inserts can be swapped in minutes with minimal downtime
- **Shut-off (blank) inserts** are supplied as standard for single or reduced insert mold production
- Also available in **E-Style Frame** configuration for top-loading and handling large insert molds

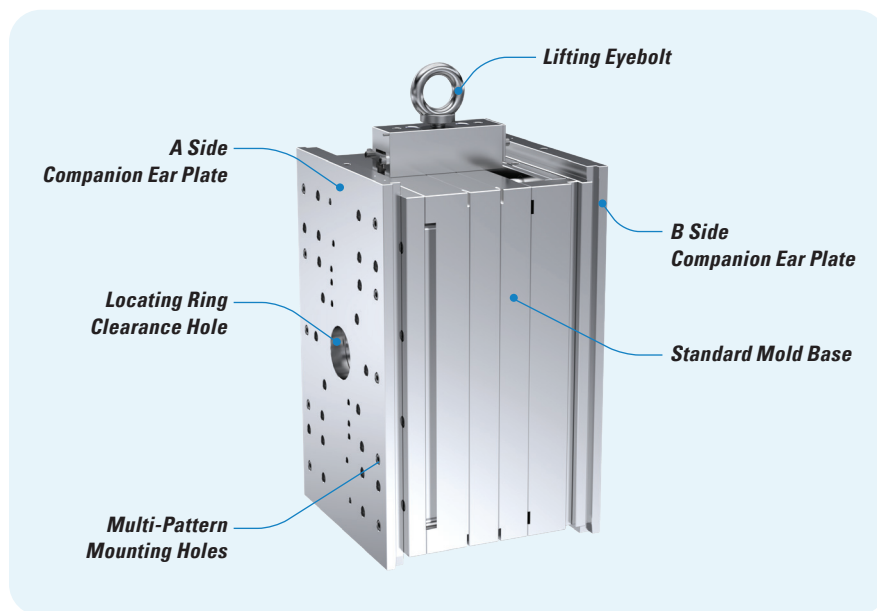
MUD[®] Quick-Change Adapter Frame Systems

Convert standard mold bases into a Quick-Change system

MUD Adapter Frames extend Quick-Change capability to existing standard mold bases. The adapter frame remains installed in the molding machine while molds equipped with **companion ear plates** can be loaded and removed quickly **without machine modification**.

This allows manufacturers to integrate Quick-Change efficiency into current tooling investments while **reducing setup time** and improving machine utilization.

Required Modifications to Standard Mold Bases



Optimizing Production with Adapter Frames

- Utilize standard mold bases to **reduce tooling investment**
- Perform mold changes in **minutes instead of hours**
- Eliminate the need for **machine modifications**
- Standardize changeover process across **multiple molds**
- Improve machine utilization by **reducing setup time**



MUD® Quick-Change

Frame Options & Standard Components

Customise frames and insert molds with a full range of options and precision components

Available Options

MUD Quick-Change frames and companion insert molds are available in a range of standard configurations that are ready to use for most injection molding applications. In cases where standard configurations do not fully meet application-specific requirements, a comprehensive range of options is available to modify and extend the system.

Frame options: Interlocking ejector systems, master ejector plates, removable center bar assemblies, hot runner manifolds, insulation boards, spacer bars, adapter rails and water line connections.

Insert options: Complete ejector systems, stripper plates, sleeve ejection, three-plate construction, cam slide machining, hot runner molding, water line machining and unscrewing mechanisms.

Standard Components

MUD Quick-Change frames and companion insert molds are **supplied complete with the standard components required for installation and operation**. These include sprue bushings, locating rings, guide posts, leader pins and bushings, ejector plates, ear plates and pillar posts. Where additional components are needed to suit a specific machine or application, **a comprehensive range of accessories is available**, covering mold clamps, hoist rings, shoulder screws, sprue puller plugs, adapter frame rollers and holding clamps.

Explore the Full Range

Explore the full MUD Quick-Change range of frames, inserts, components and accessories.

Click here or scan the QR Code for the complete catalog.



MUD MASTER UNIT DIE
MUD® Quick-Change Systems

World Headquarters

DME Company LLC

800-626-6653 *toll-free tel*

248-398-6000 *tel*

www.DME.net *web*

DME_Mech_Eng@dme.net *e-mail*

DME Canada

800-387-6600 *toll-free tel*

905-677-6370 *tel*

www.DME.net *web*

DME_Canada@DME.net *e-mail*

DME Mexico

52.442.713.5666 *tel*

www.dme.net *web*

DME_MX@DME.net *e-mail*