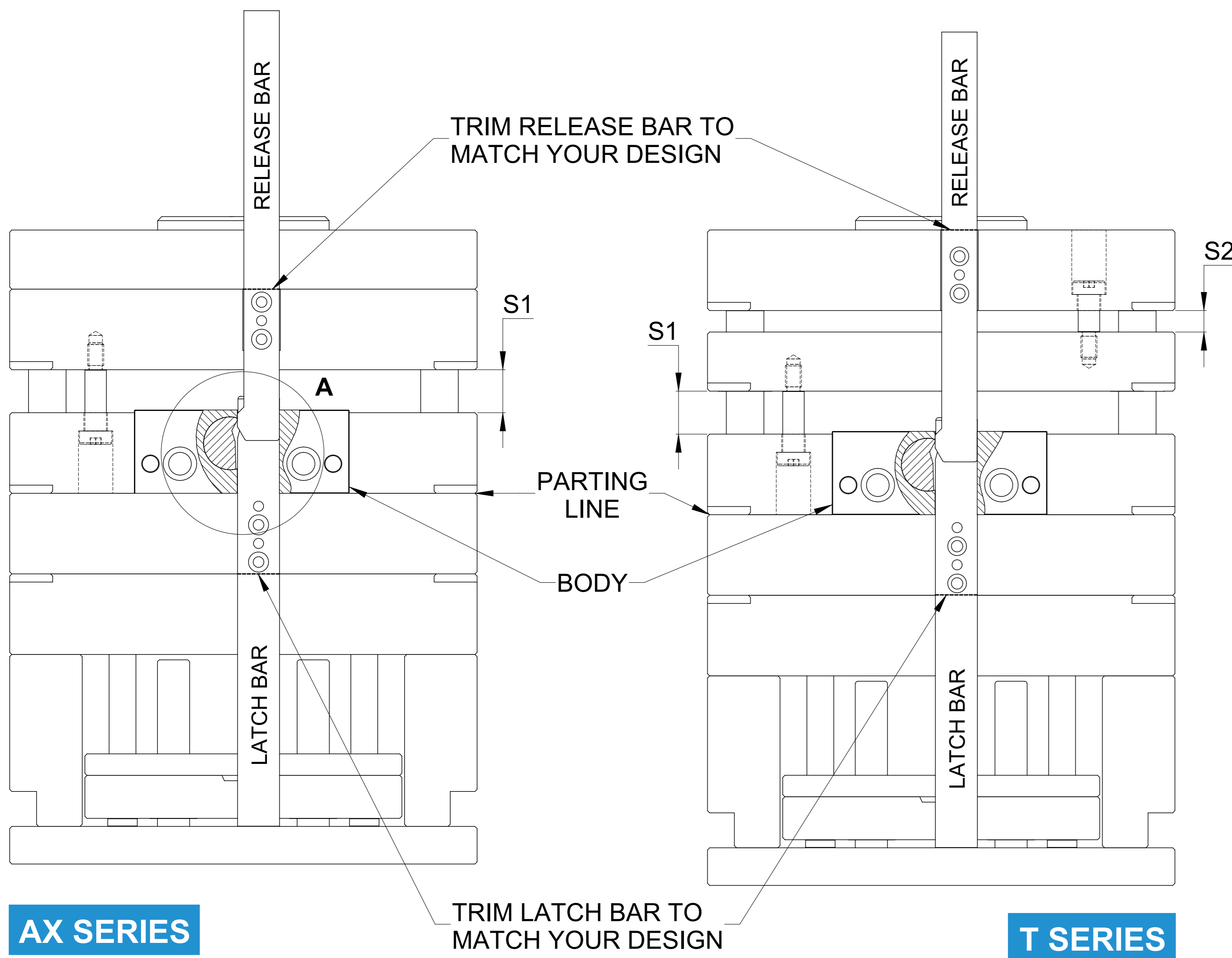


JIFFY LATCH-LOK - DESIGN GUIDE

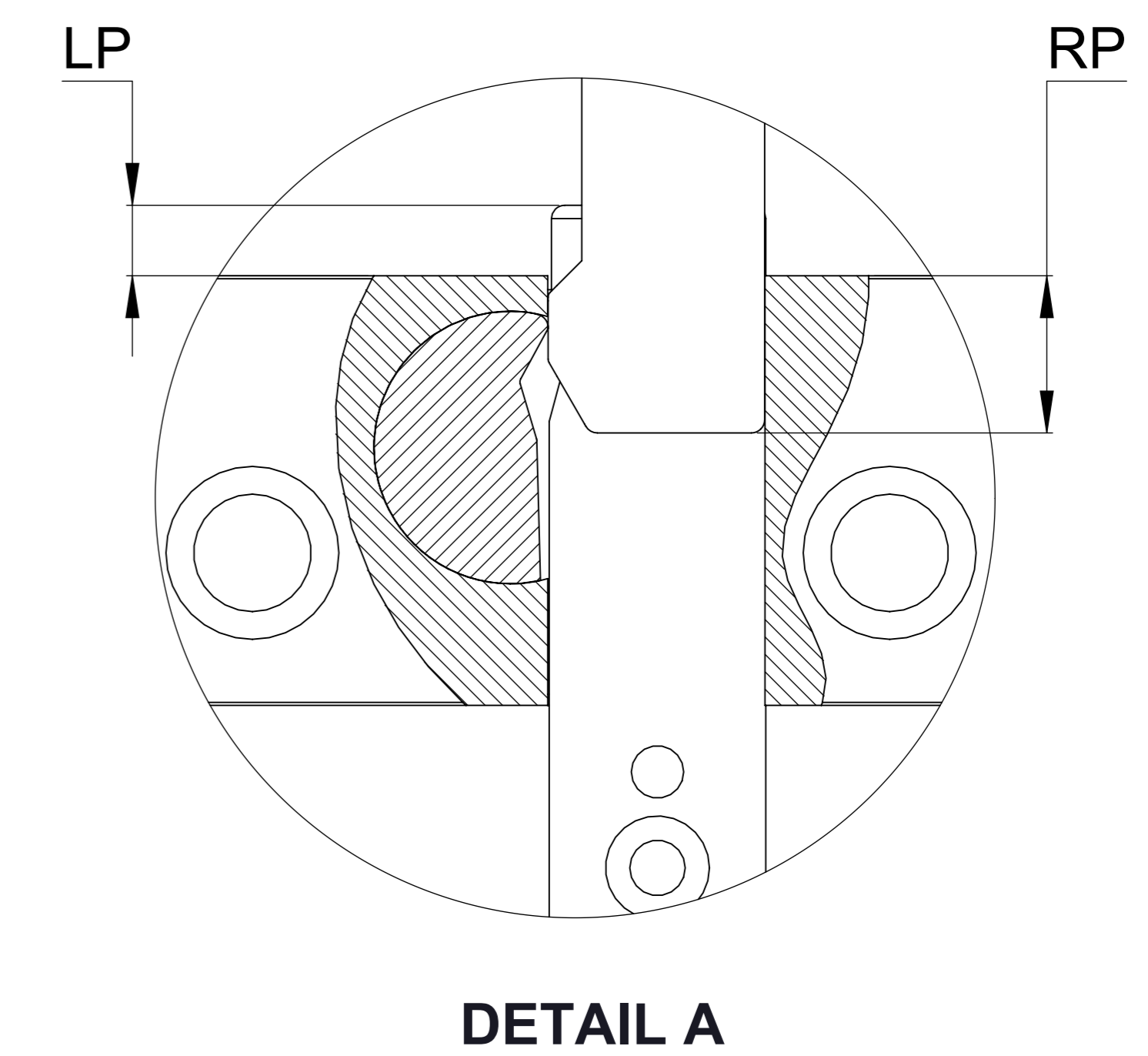


APPLICATION 1: OPEN S1 AND S2 FIRST AND THEN OPEN PL

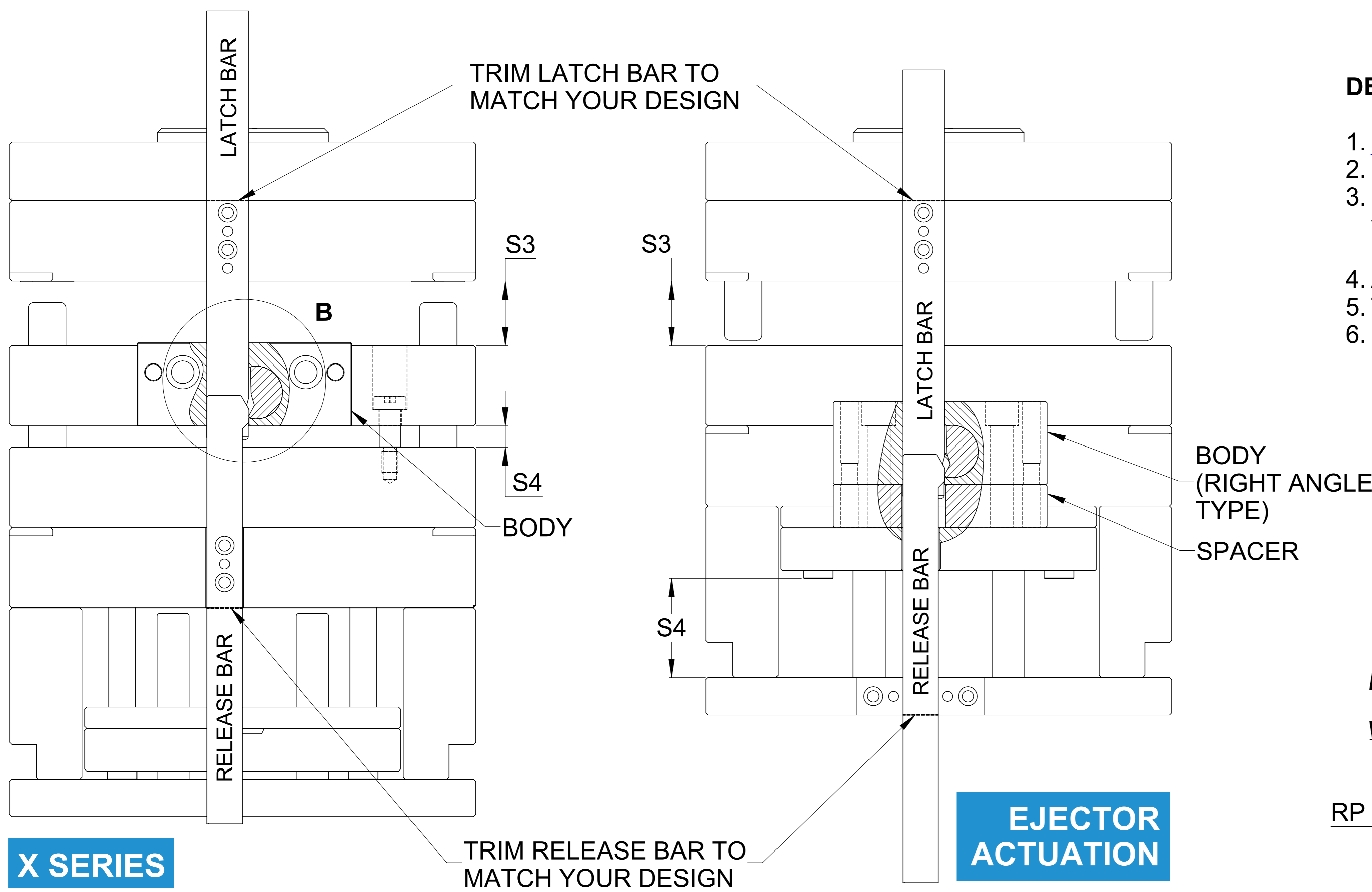


DESIGN PROCEDURE:

1. [Download the 3D assembly model \(Click Here\).](#)
2. Keep S1 & S2 open and keep parting line close.
3. Locate the downloaded 3D assembly model to your ideal position (Downloaded CAD already has Latch Bar at LP & Release Bar at RP).
4. Add bolts and dowels to fix Body and Bars.
5. Trim Bars to match your design.
6. If shoulder bolts are used, make sure the shoulder bolt opening is more than S1 and S2.

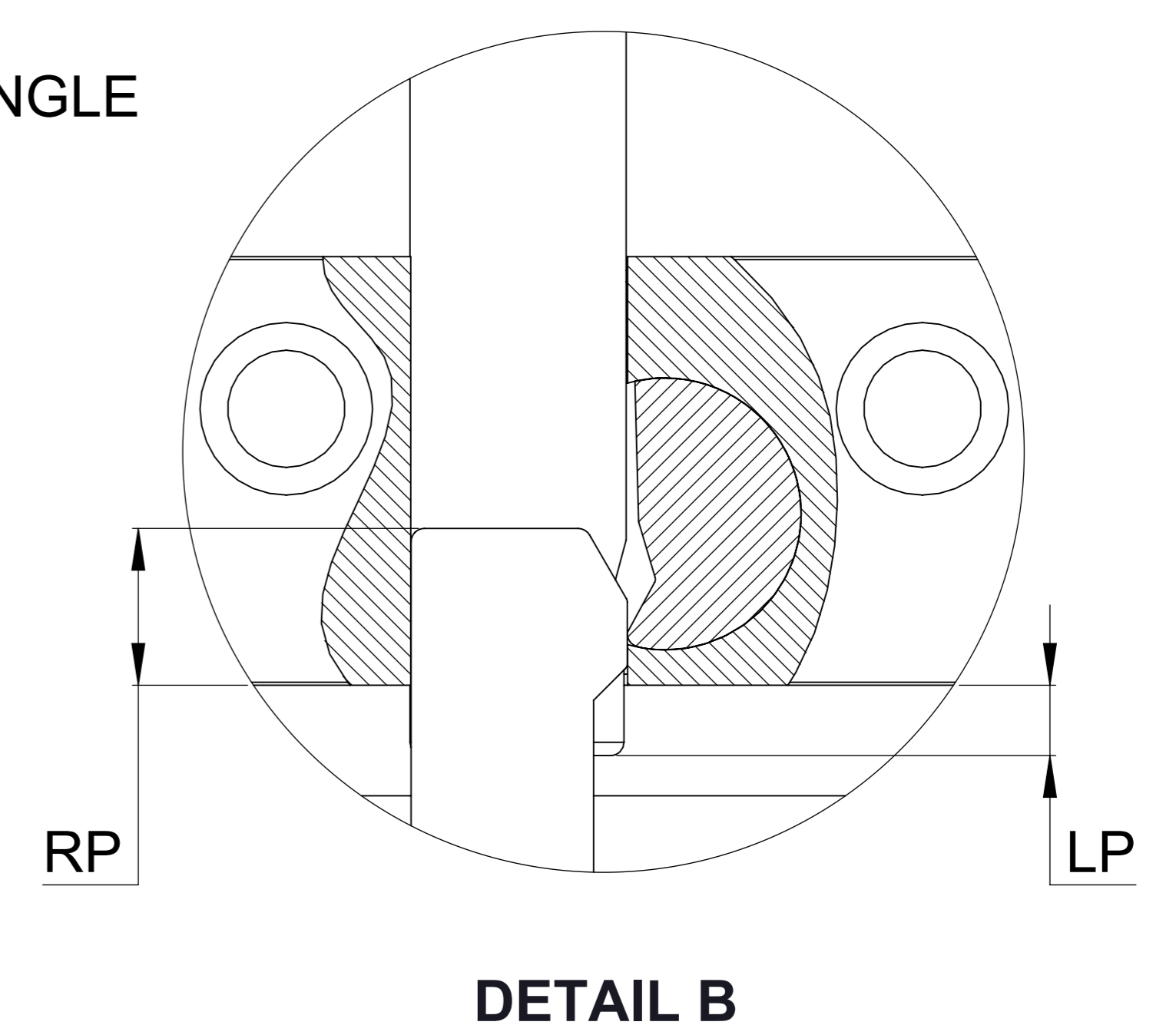


APPLICATION 2: OPEN PL TO S3, OPEN EJECTOR TO S4 & CONTINUE PL OPEN



DESIGN PROCEDURE:

1. [Download the 3D assembly model \(Click Here\).](#)
2. Set initial PL opening S3 & keep S4 open.
3. Locate the downloaded 3D assembly model to your ideal position (Downloaded CAD already has Latch Bar at LP & Release Bar at RP).
4. Add bolts and dowels to fix Body and Bars.
5. Trim Bars to match your design.
6. If shoulder bolt is used, make sure the shoulder bolt opening is more than S4.



ITEM NUMBER	RP (RELEASE POINT)		LP (LOCK POINT)	
	RP	LP	RP	LP
LL050	0.433"	11mm	0.184"	4.68mm
LL101	0.709"	18mm	0.318"	8.08mm
LL151	0.709"	18mm	0.318"	8.08mm
LL201	0.985"	25mm	0.373"	9.48mm

NOTE: Keep DME Jiffy Latch-Lok assembly lubricated while in operation with **DME Super Grease** once a month.