



DME[®]
Mold Vacuum Systems

MOLD ✓ **AC**



THE POWER TO
CONTROL YOUR PROCESS

MoldVac Gas Purging Systems

Mold-Vac® is a standalone family of systems designed to eliminate molding problems caused as a result of gas and air entrapment. Exclusive to Mold-Vac design is our “blowback” control feature which cleans vented pins after every cycle. Mold-Vac provides precise LCD touch screen controls for vacuum and timing functions. Economically priced, all units are easy to install and operate.

Mold-Vac was developed to solve the common problem all molders experience, gas & air entrapment and plugged vents.

Offered in (3) sizes, all units are designed to draw up to 20” - 24” of vacuum with precision control. In addition, each unit features a unique blowback feature which keeps your vented pins clean thereby reducing tool maintenance and downtime.



- WHY MOLDVAC**
- **Improved Part Quality** - Eliminates part burns, blemishes, voids and short shots
 - **Reduced Cycle Time** - Back pressure replaced by vacuum
 - **Reduced Tool Downtime** - Volatiles removed by vacuum and blowback action

UNIT IN-DEPTH Vacuum Generation

- The MV10KDME unit requires the use of compressed air at 65psi and 33cfm to achieve 36 (in³/s) of vacuum. The 20K and 40K units use a servo driven motor to generate vacuum ratings of 900 and 1,665 (in³/s) respectively.

Blowback Function

- The two-phase blowback assists in part ejection (1st phase) and purges vented pins (2nd phase). Purging of the vent pins reduces mold maintenance and increases productivity.

Precise Control

- Custom precision microprocessor allows for precise control of vacuum and blowback functions. Vacuum control can be adjusted to 1/10th of a second, eliminating flash and improving part quality.

Portability

- The self-contained, compact design and quick disconnects allow the Mold-Vac to be easily moved from press to press.

Flexibility

- Mold-Vac is available in (3) sizes. Unit selection is based on 1st stage fill time, cavitation, and part volume(in³).

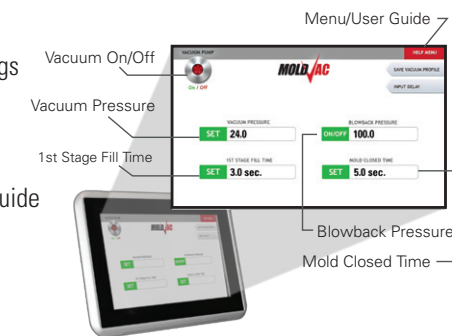


MOLDVAC 40,000

Gas Purging System

DESCRIPTION The newest and largest mold evacuation unit available. Faster and more powerful, the 40,000 is built specifically for larger parts or to handle the fastest molding cycles.

- ADVANTAGES**
- LCD Control Screen
 - Lock in and save mold settings
 - Password protected
 - Export mold profiles
 - Built in Help Menu & User Guide
 - Great for Stack Molds



PART NUMBER
MV40KDME



MOLDVAC 20,000

Gas Purging System

DESCRIPTION The 20,000 is our most popular unit size. The power and speed to handle the majority of applications.

- ADVANTAGES**
- LCD Control Screen
 - Lock in and save mold settings
 - Password protected
 - Export mold profiles
 - Built in Help Menu & User Guide



PART NUMBER
MV20KDME

MOLDVAC 10,000

Gas Purging System

DESCRIPTION Designed for smaller parts with slower fill speeds or less aggressive applications.

- ADVANTAGES**
- Easy to read control panel
 - Cost effective
 - Self-contained, compact design
 - Adjustable vacuum cycle time



PART NUMBER
MV10KDME



Easy Order 24/7
eSTORE
store.milacron.com



Highest Performance

Performance Characteristics	10,000 Series	20,000 Series	40,000 Series
Vacuum Rating (in³/s)	36	900	1665
Vacuum Reservoir (in³)	74	2,700	5000
Vacuum Level (in of hg)*	20-24	24-26	25-26

Physical Dimensions (US)			
Height	42"	42"	50"
Width	18"	18"	20"
Depth	24"	28"	34"
Weight	150 lbs.	180 lbs.	200 lbs.

Utility Requirements			
Voltage	110/1/60	230/460/3/60	230/460/3/60
Amp Draw	2 Amps	4 Amps / 2 Amps	4 Amps / 2 Amps
Compressed Air Requirement	32 cfm @ 65psi	65 psi	65 psi
Air Inlet Size (in)	3/8" NPT	3/8" NPT	3/8" NPT
Pipe Connection (connect to mold)	3/4" NPT	3/4" NPT	1 1/4" NPT

Can DME provide the necessary tooling recommendations?

Yes, we can provide the necessary drawings illustrating the modifications required. Please submit a core/cavity plan and section views of the mold, a sample part and an explanation of the problem. Contact us today to find out more about the amazing MoldVac systems.

* Vacuum ratings and level are approximations based on mold design & construction.



World Headquarters

DME Company LLC

29111 Stephenson Highway
Madison Heights, MI 48071
800-626-6653 toll-free tel
248-398-6000 tel
888-808-4363 toll-free fax
www.dme.net web
dme@dme.net e-mail

DME of Canada Ltd.

6210 Northwest Drive
Mississauga, Ontario
Canada L4V 1J6
800-387-6600 toll-free tel
905-677-6370 tel
800-461-9965 toll-free fax
dme_canada@dme.net e-mail

DME Mexico / South America

Circuito el Marques Notre, No.55
Parque Industrial El Marqués
El Marqués, Querétaro, CP 76246
52.442.713.5666 tel
dme_mexico@milacron.com



store.milacron.com
Shop online 24/7.